

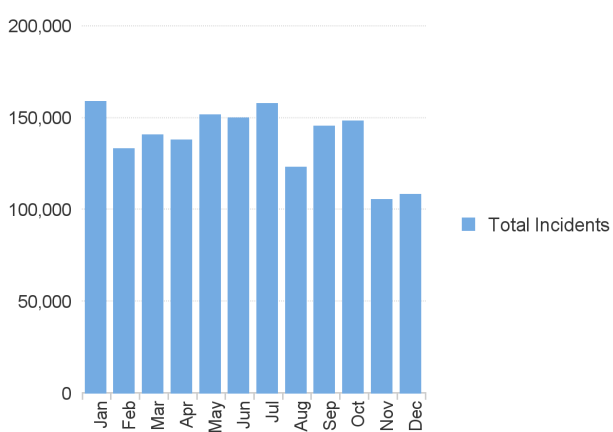
NFIRS Dashboard Summary Report (All Incidents)

Report Period: 1/1/24 to 12/31/24

Summary By Incident Type Category

Incident Type Category	Total Incidents	Percent	Aid Given	Exposures	Grand Total
Fires (100-173)	37,023	2.4%	15,247	458	52,728
Overpressure Rupture, Explosion, Overheat Calls (200-251)	1,013	0.1%	70	0	1,083
Rescue and EMS Calls (300-381)	1,086,827	70.2%	34,053	1	1,120,881
Hazardous Condition Calls (400-482)	48,717	3.1%	1,712	0	50,429
Service Calls (500-571)	135,092	8.7%	11,127	0	146,219
Good Intent Calls (600-672)	87,597	5.7%	39,836	0	127,433
False Alarm and False Calls (700-751)	146,649	9.5%	6,283	0	152,932
Severe Weather and Natural Disaster Calls (800-815)	1,305	0.1%	47	0	1,352
Special Incident Type Calls (900-911)	2,956	0.2%	99	0	3,055
Unknown or Not Reported	149	0.0%	3	1	153
Grand Total	1,547,328	100.0%	108,477	460	1,656,265

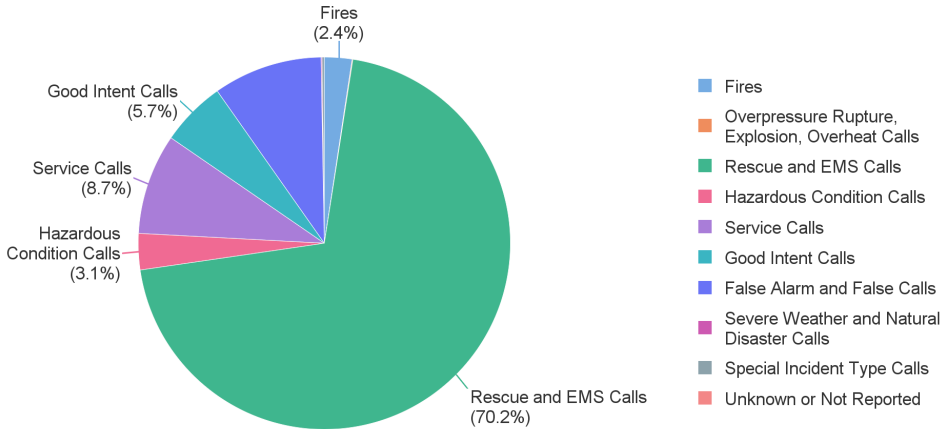
Incident Counts By Month of Year



Monthly Incident Counts

Jan	Feb	Mar	Apr	May	Jun	Jul	Aug	Sep	Oct	Nov	Dec	Grand Total
158,450	132,793	140,367	137,553	151,219	149,575	157,468	122,630	145,166	148,029	105,039	107,976	1,656,265

Incident Type Category Summary



Percent Valid

99.6%

Percent Released

88.2%

Incident Valid Status Summary

Incident Valid Status	Total	Percent
Valid	1,649,460	99.6%
Invalid	6,801	0.4%
No Activity	358	0.0%
Grand Total	1,656,619	100.0%

Incident Release Status Summary

Incident Valid Status	Total	Percent
Released	1,460,870	88.2%
Unreleased	195,749	11.8%
Grand Total	1,656,619	100.0%

Fire Service Injuries

1,530

Fire Service Deaths

0

Fire Service Casualty Summary

Fire Service Casualties	Fire-Related	Non-Fire	Grand Total
Fire Service Injuries	785	745	1,530
Fire Service Deaths	0	0	0
Total Fire Service Casualties	785	745	1,530

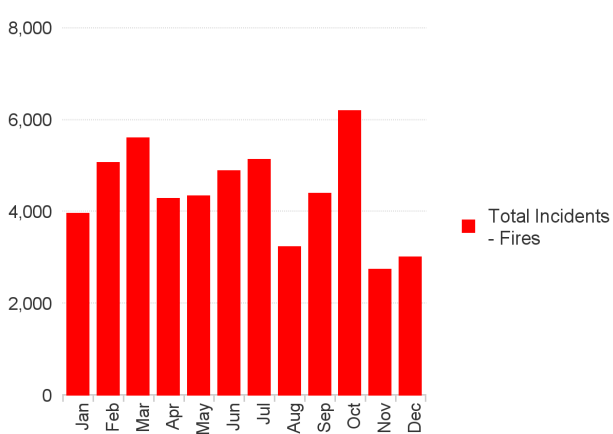
NFIRS Dashboard Summary Report (Fire Incidents)

Report Period: 1/1/24 to 12/31/24

Summary By Incident Type Category

Incident Type Group	Total Incidents	Percent	Aid Given	Exposures	Grand Total
Structure Fires (111-118)	15,827	42.7%	11,343	282	27,452
Fires in Mobile Property Used as a Fixed Structure (120-123)	248	0.7%	130	10	388
Mobile Property (Vehicle) Fires (130-138)	6,131	16.6%	896	118	7,145
Natural Vegetation Fires (140-143)	5,601	15.1%	1,486	5	7,092
Outside Rubbish Fires (150-155)	6,815	18.4%	299	10	7,124
Special Outside Fires (160-164)	880	2.4%	145	12	1,037
Cultivated Vegetation, Crop Fires (170-173)	279	0.8%	226	0	505
Fires, Other (100)	1,242	3.4%	722	21	1,985
Grand Total	37,023	100.0%	15,247	458	52,728

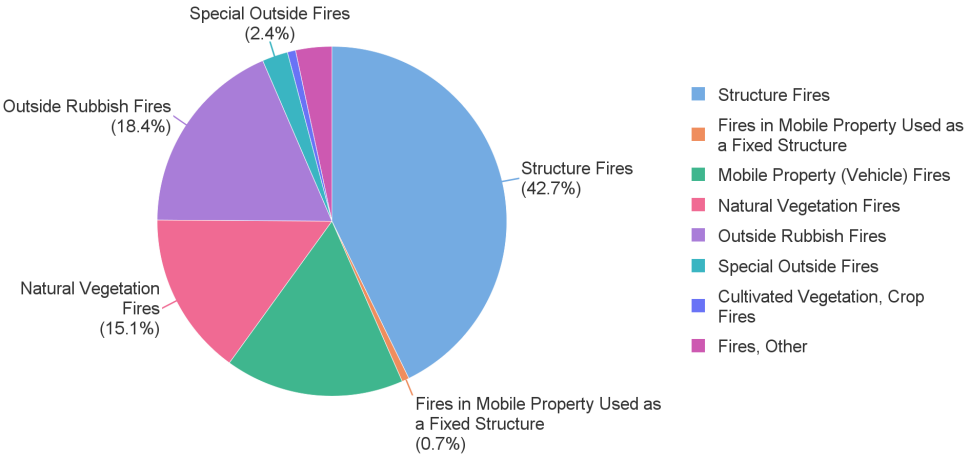
Fire Incident Counts By Month of Year



Monthly Incident Counts

Jan	Feb	Mar	Apr	May	Jun	Jul	Aug	Sep	Oct	Nov	Dec	Grand Total
3,949	5,058	5,594	4,273	4,327	4,882	5,124	3,220	4,384	6,184	2,734	2,999	52,728

Fire Incident Type Category Summary



Fire Dollar Loss Summary

Dollar Loss	Grand Total
Total Fire Property Loss	\$368,683,490
Total Fire Contents Loss	\$161,898,617
Total Fire Dollar Loss	\$530,582,107

Total Fire Dollar Loss  
**\$530,582,107**

Civilian Fire Injuries

**342**

Civilian Fire Deaths

**102**

Civilian Fire Casualty Summary

Civilian Fire Casualties	Grand Total
Civilian Fire Injuries	342
Civilian Fire Deaths	102
Total Civilian Fire Casualties	444