



OFFICE OF THE ILLINOIS STATE FIRE MARSHAL

Pyrotechnic-Fireworks & Explosives Training for Firefighters, Law Enforcement and Code Officials

March 18, 2025, 8:30 A.M. – 4:00 P.M.
Palatine Village Hall
Meeting Room B
200 E. Wood Street, Palatine, IL 60067

This is a FREE training program. Participants will receive a Certificate of Attendance.

Lunch is on your own.

Parking: Free parking is available on the South and West sides of the building. Please see the attached map.

Doors open at 8:00 A.M. Please arrive early for attendance and registration.

The Office of the State Fire Marshal will provide a day long training program on fireworks, pyrotechnics, and special effects at the Palatine Village Hall in Palatine. Training includes a review of State and Federal regulations including: IDNR, OSFM, ATF, DOT, OSHA, CPSC, NFPA standards and industry best practices. We encourage all Fire Service, Law Enforcement, Code Officials and Venue Managers to attend.

Online Registration is available on the OSFM website, please register at [SFM.Illinois.Gov](https://sfm.illinois.gov)

<https://sfm.illinois.gov/iam/business/fireworks/form-pyrofireworks-trainingforcodeofficialsregistration>

For more Information contact the Office of the Illinois State Fire Marshal, Pyrotechnics-Fireworks Division via email at: SFM.PyroFireworks@illinois.gov

Consumer (1.4G) Fireworks Retail Sales

Commonly referred to as “backyard” fireworks sold at retail outlets year-round and roadside stands.

NFPA 1124 Retail Sales	Warehouse/Storage	Illinois Rules for Retail Sales
Products & Packaging	Fireworks Emergencies	Novelties

Professional Display (1.3G) Fireworks

Products used by professional fireworks display companies & typically discharged for community events.

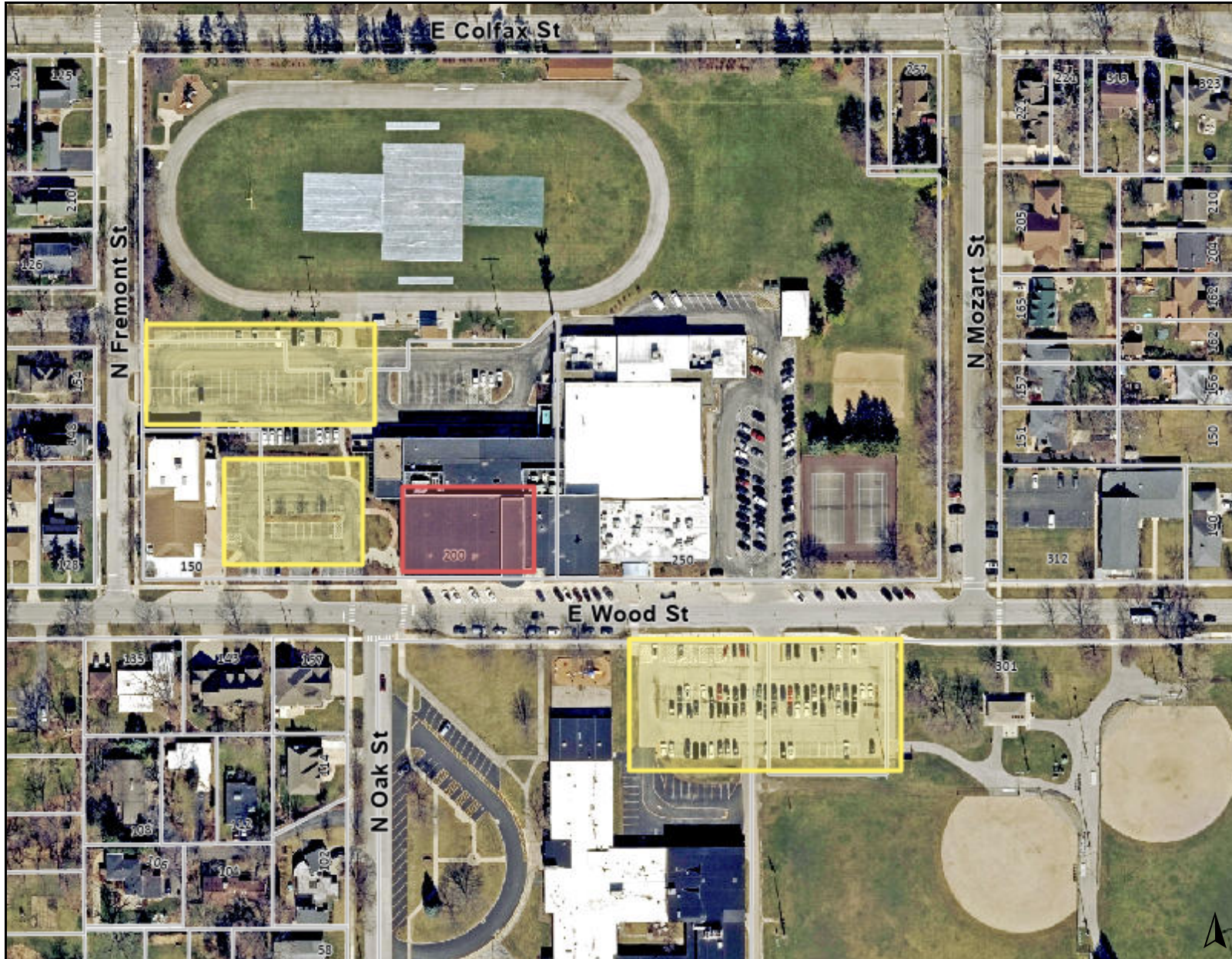
Types of Displays	NFPA 1123 Overview	Safety Equipment & Set-Ups
Display Site Venues	Fallout Zones & Weather	Emergency Response Guidance
License and Permits	Illegal Sale, Use, & Storage	Transportation

Proximate Pyrotechnics and Flame Effects (Outdoor & Indoor)

Permit and compliance requirements for products and effects in the entertainment industry at indoor venues (theatres, concerts, arenas) or outdoor venues (stadiums, amphitheatres, roof tops) where the audience or performers are within 75 feet. *This training meets the OSFM rules for AHJ's that issue permits for indoor and proximate pyrotechnics.*

NFPA 1126 & 160 Overview	Storage Requirements	Fire Detection
Pre & Post Show Planning	Types of Devices	Life Safety Systems
Safety Requirements	APA Proximate Pyro Checklist	Illinois Licensing & Permit Rules

GIS Consortium | 200 E Wood St Parking lots in Yellow



Legend

Notes

0 300 600
ft

Print Date: 1/15/2025

Disclaimer: The GIS Consortium and MGP Inc. are not liable for any use, misuse, modification or disclosure of any map provided under applicable law. This map is for general information purposes only. Although the information is believed to be generally accurate, errors may exist and the user should independently confirm for accuracy. The map does not constitute a regulatory determination and is not a base for engineering design. A Registered Land Surveyor should be consulted to determine precise location boundaries on the ground.